

Disability Advocacy and Domestic Abuse

This is an easy read booklet.

It is to support people to understand:

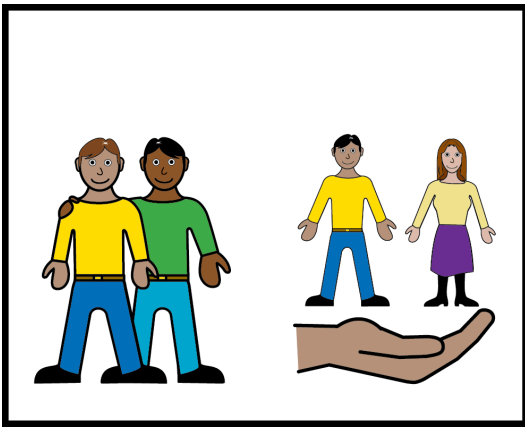


What is domestic
abuse?

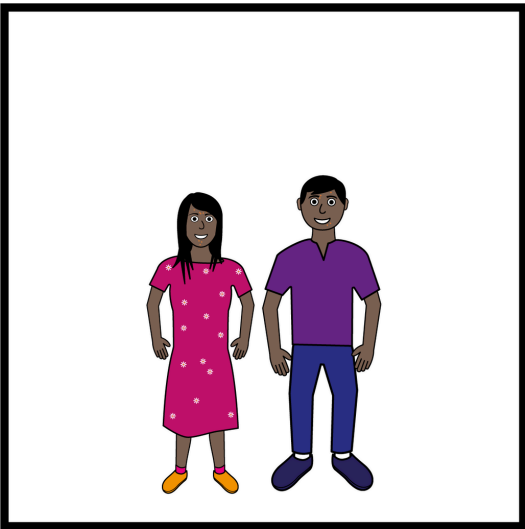
What does abuse look
and feel like?



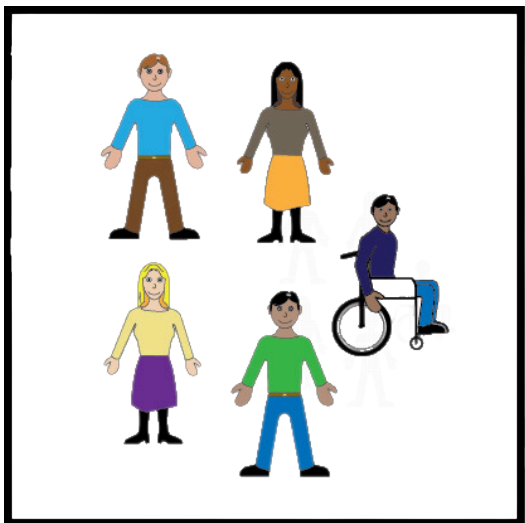
Who you can contact if
you or someone you
know needs support.



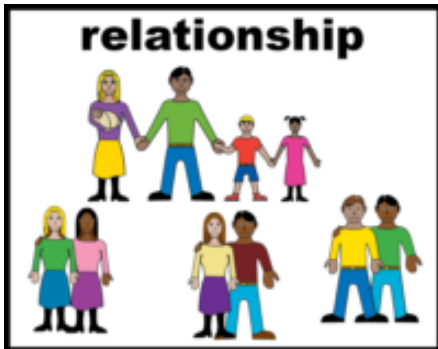
Anyone can be a victim
of domestic abuse.



Anyone can be a
perpetrator of domestic
abuse.



What is domestic abuse?



Domestic means that the abuse comes from someone you know.

- Partners or Ex-partners
- Family



Abuse means being treated in a way that makes you feel:

Unsafe

Hurt

Scared

Confused

Upset

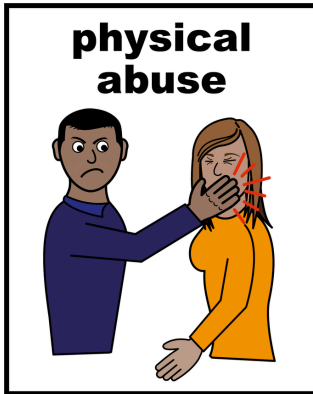
Angry



Domestic abuse can happen **anywhere** and to **anyone**.



Types of domestic abuse



Physical abuse

- Someone may hurt you physically.
- Someone might neglect to support your daily needs.



Sexual abuse

- Someone may touch your genitals or body without you saying yes.
- Someone might force you to do sexual acts.



Emotional abuse

- Someone may say hurtful things that make you feel worried or sad



Financial abuse

- Someone may control how you spend your money.
- Someone may take your money.

Disability and domestic abuse

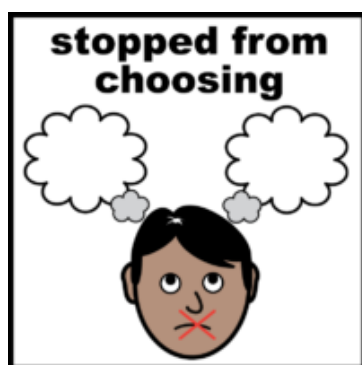
Disabled people might be at higher risk of abuse.



An abuser might refuse or break mobility and sensory aids.



An abuser might stop someone communicating how they feel.



An abuser might be the main carer or support for a disabled victim.



An abuser might have control over medication, appointments and routine.

What we can help with



Domestic abuse is a crime.

You have a right to support.



We can offer confidential support if you experience domestic abuse.



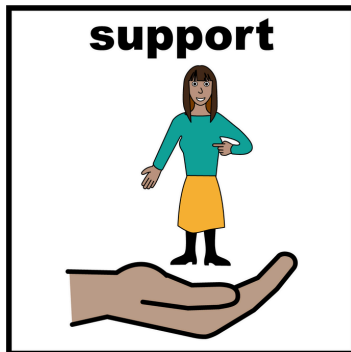
We can act as an advocate to help you reach out to other services.



We can support you with:

- feeling safe
- independence
- housing

Who to contact



You or someone you trust can contact a domestic abuse support service.

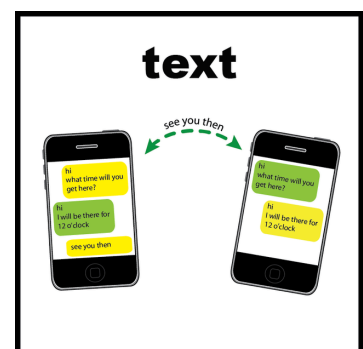
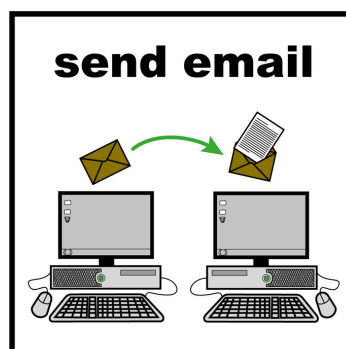


If you are in immediate danger, ring 999.



To contact us, you can:

- Call us
- Send us an email



**SOUTH WEST SURREY DOMESTIC ABUSE
SERVICE**

Guildford and Waverley

01483 898884

swr@swsda.org.uk

EAST SURREY DOMESTIC ABUSE SERVICES

Reigate and Banstead, Mole Valley and

Tandridge

01737 771350

support@esdas.org.uk

**NORTH SURREY DOMESTIC ABUSE
SERVICE**

Epsom, Ewell, Elmbridge and Spelthorne

01932 260690

outreach@nsdas.org.uk

YOUR SANCTUARY

Woking, Runnymede and Surrey Heath

01483 776822

outreach@yoursanctuary.org.uk

Surrey Domestic Abuse Helpline: 9am-9pm

01483 776822